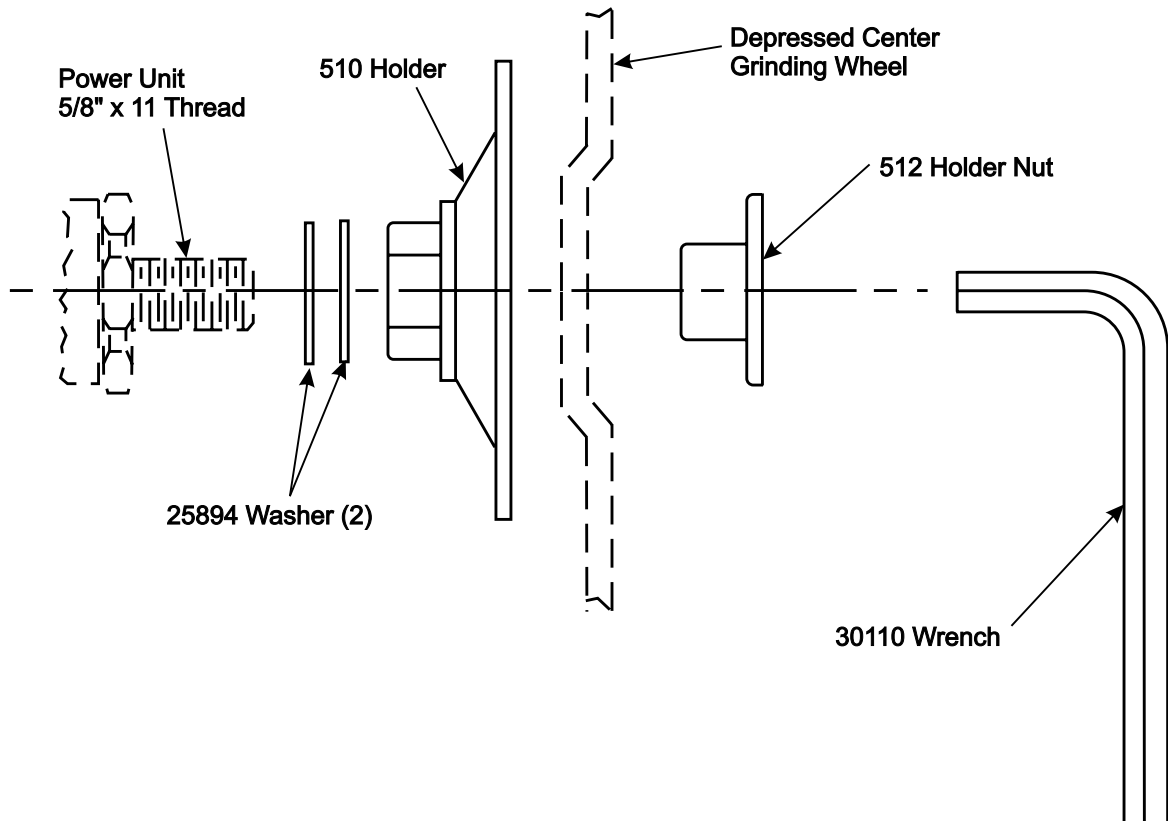




# INSTRUCTIONS FOR NO. 510 HOLDER FOR DEPRESSED CENTER GRINDING WHEELS



The No. 510 holder is used to mount 7" and 9" depressed center grinding wheels, both types (Cool-Flat and Cool-Cone) to any sander or grinder of the proper speed and equipped with a 5/8" x 11 thread nominally one inch in length.

Tighten the holder securely to the spindle, spacing the holder with the No. 25894 washers, if necessary to secure the proper extension of the threads for the specific thickness of grinding wheel used.

Make certain that the No. 512 holder nut threads on to the spindle with sufficient length of thread and yet does not bottom. Approximately 1/32 inch from bottoming is desirable.

**CAUTION:** Use with the proper guard and at the proper speed. Refer to the American National Standards Institute (ANSI B7.1) "Safety Requirements For The Use, Care And Protection of Abrasive Wheels".

**SIoux<sup>TM</sup>**  
**TOOLS INC.**

2901 FLOYD BOULEVARD ■ PO BOX 507 ■ SIOUX CITY, IOWA 51102-0507 USA ■

Printed In U.S.A.